

**FLYING FOX**  
**DEVELOPMENT**  
**PASTORAL | AGRICULTURE**  
**Mark Sullivan**

# Flying Fox Development Overview

- ▶ Over the past 4 years developed initial stages for an irrigated agriculture development, using surface water harvesting during peak wet season flows and dry season crops.
  - ▶ On Flying Fox Station on Roper Hwy, in the Katherine Region.
  - ▶ Up to 20,000 hectares for flood irrigation
  - ▶ Climate and soils ideally suited for dry season cropping
  - ▶ Irrigation water by wet season surface water catchment
- ▶ Worked with
  - ▶ Ian Baker, North Australian Agribusiness Management
  - ▶ Mr. John Grabbe, who has extensive experience in large scale irrigation projects and water storage development (Developer of Cubbie Station)
  - ▶ Mr. Stephen Yeates, CSIRO (14 years with the NTG DPI cotton R&D)

# Flying Fox Station: Demographics

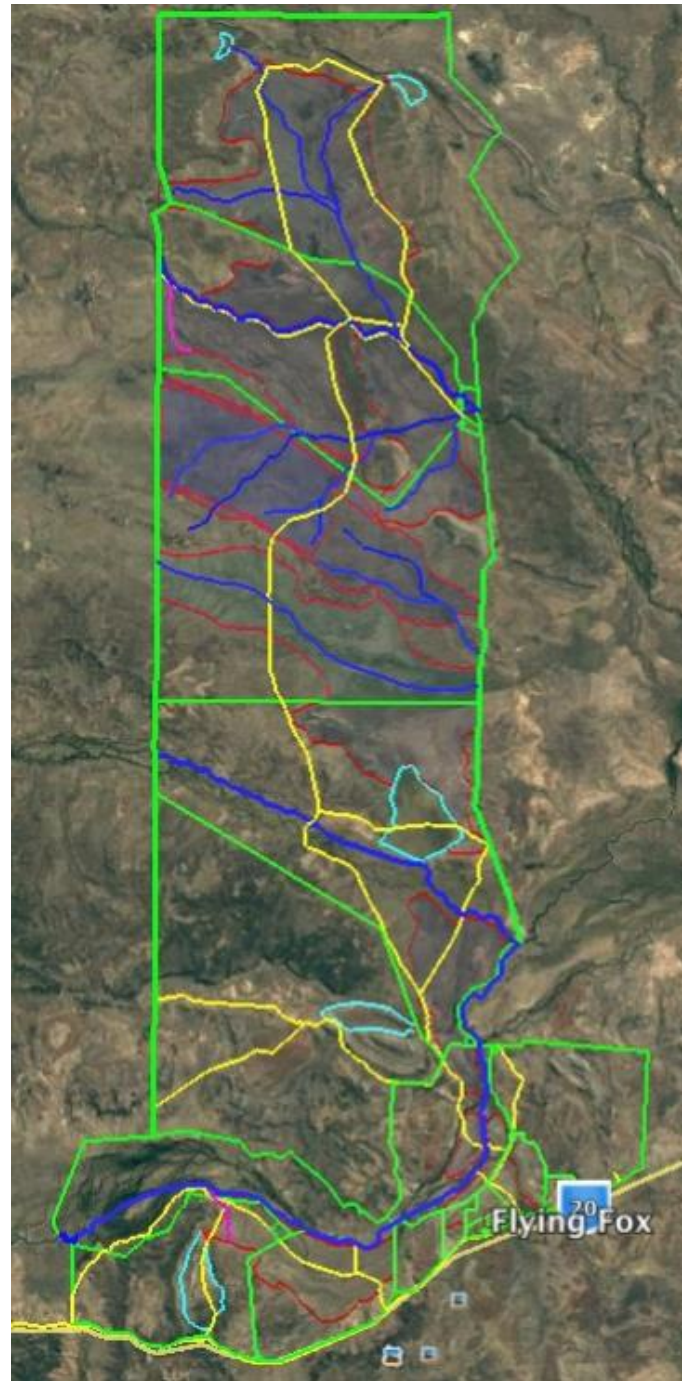
- ▶ Flying Fox is located 500km southeast of the Darwin port.
- ▶ 200km from the Katherine Agriculture Hub and 115km from Mataranka.
- ▶ Bitumen access to the homestead.
- ▶ 900 km<sup>2</sup> in total size (90,000 Ha)
- ▶ Average annual rainfall: 1000ml
- ▶ NT Government Pastoral Lease (99 years perpetual)

# Flying Fox Station: Homestead



# Suitable Agricultural Land

- ▶ Flying Fox has potentially 20,000 hectares of land suitable for flood irrigation.



# Irrigation Proposal, Flying Fox Station:

- ▶ This project relies on surface water catchment during the wet season to be utilised throughout the dry season for flood irrigation.
  - ▶ No draw down on aquifers or rivers, with minimal environmental impact; no dams on main watercourses
  - ▶ Design for catchments on Flying Fox currently completed at a desktop level, at 100 - 150GL between multiple storage facilities.

# / OFFSTREAM CATCHMENT

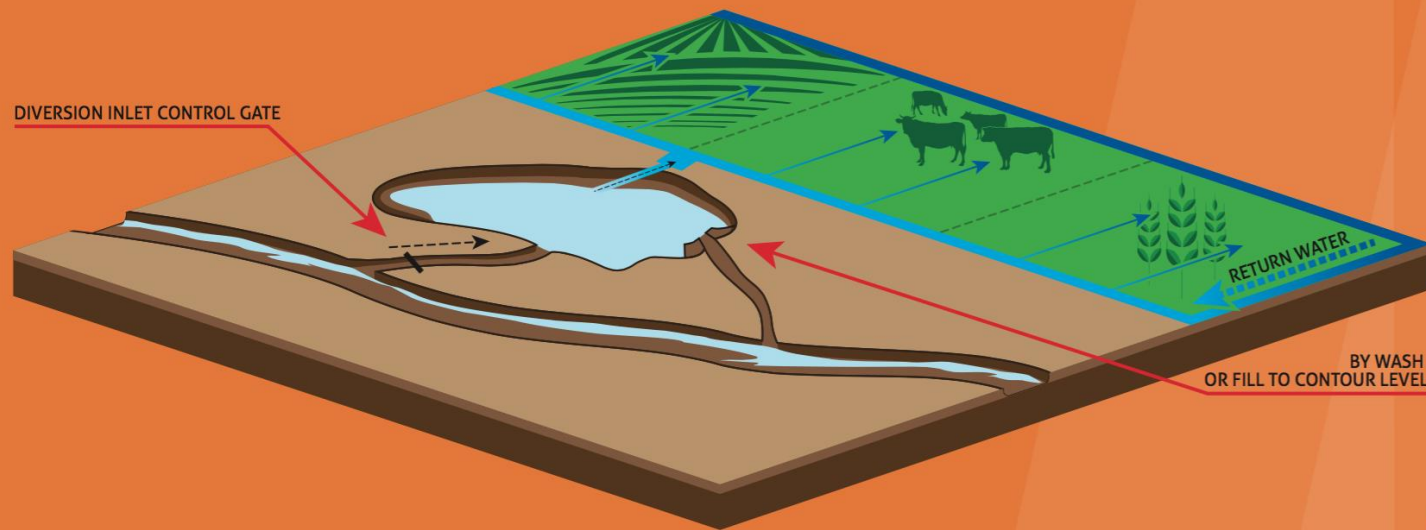


Dry



FLY FOX PTY LTD

# / OFFSTREAM CATCHMENT

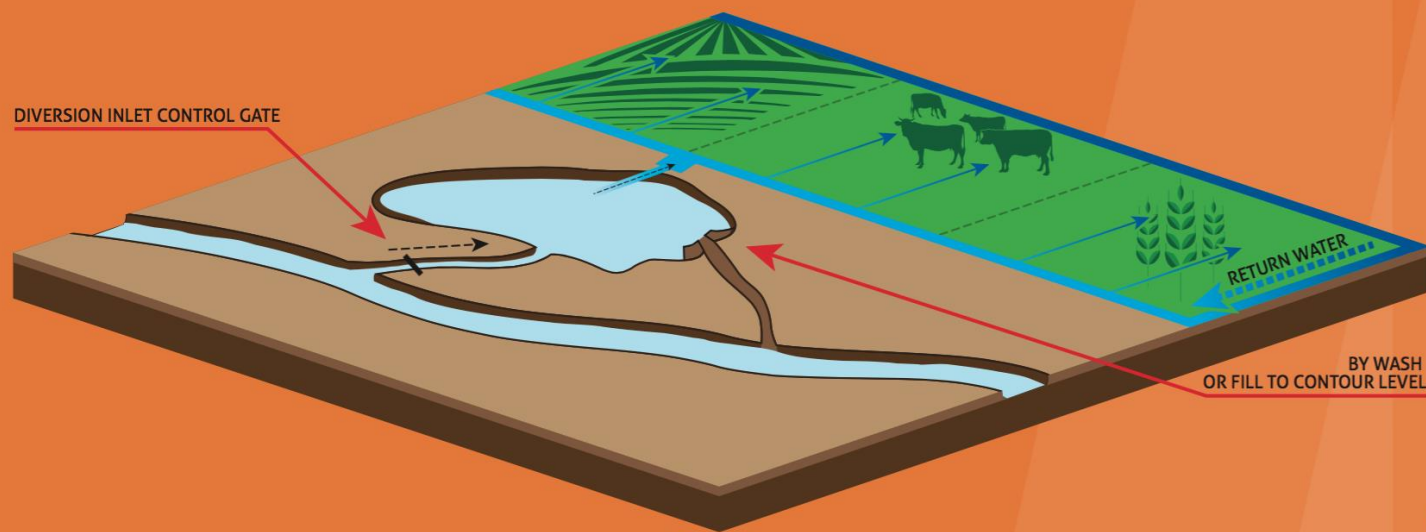


Low

  
FLY FOX PTY LTD



# / OFFSTREAM CATCHMENT

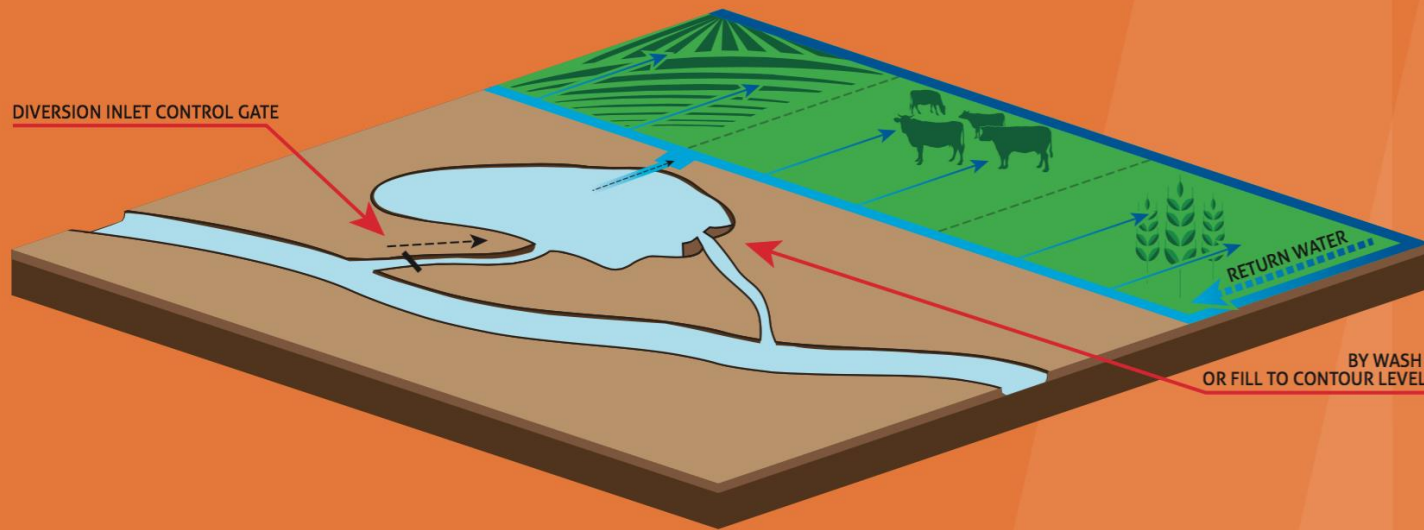


High



FLY FOX PTY LTD

# / OFFSTREAM CATCHMENT



## Over Flow



FLY FOX PTY LTD

# Example of Flood Irrigation



# Regional Development

- ▶ An opportunity exists to develop Flying Fox as an agricultural precinct to support the Katherine Regional Agriculture Hub.
- ▶ This would also be a large regional employer in a region with major unemployment issues.
- ▶ CRC project to work in conjunction with the commercial development with NT Govt (DPIR, DENR)